



[← Back to article page](#)

Premium Pardo

Pardo Yachts unveiled the GT75, its new 23-metre flagship, at the Cannes Yachting Festival.

21 September 2024

Italian shipyard Pardo Yachts has unveiled its newest flagship, the Pardo GT75, at the Cannes Yachting Festival 2024.

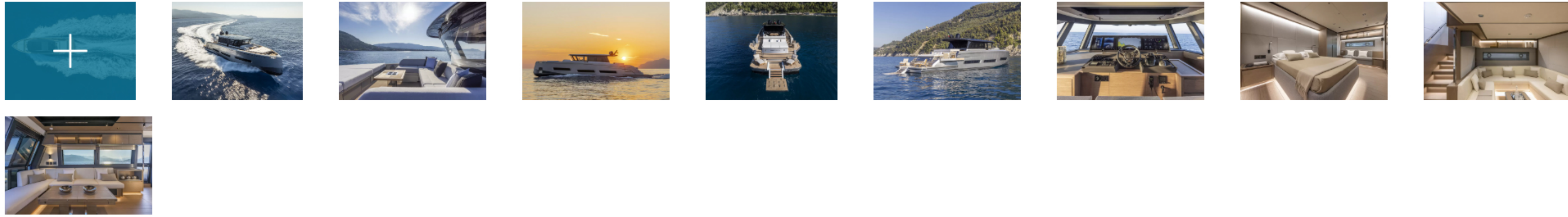
Pardo says this model represents a significant development in its GT range, showcasing design and engineering features aimed at enhancing the onboard experience while maintaining a strong connection with the sea.

The yacht, measuring nearly 23 metres in length, retains many of the signature design elements of Pardo Yachts, including the reverse bow and forward-leaning windshield.

Designed by [Zuccheri Yacht Design](#) for naval architecture and [Nauta Design](#) for interiors and exteriors, the GT75 is powered by a standard engine package featuring three Volvo Penta IPS 1050 units, each delivering 800hp. The hull has been optimised to ensure smooth performance with the Volvo Penta IPS propulsion system, while the engine room is prepared to accommodate hybrid engines.



The Pardo GT75 debuted at Cannes Yachting Festival 2024.



The Pardo GT75 includes a fuel capacity of 4,300 litres and a water capacity of 1,100 litres, offering extended range. The yacht also has a central dashboard, bow thruster, gyro stabiliser, and a second joystick in the cockpit, making it easy to handle during mooring and other procedures.

“The shipyard’s requests were clear from the beginning: to create the largest Pardo ever while staying true to the key elements that have distinguished its smaller siblings in the range,” says [Edoardo Zuccheri](#) from [Zuccheri Design](#).

The GT75 includes an enclosed superstructure with a semi-open roof, creating an airy and protected lounge space. The exterior design integrates large wrap-around windows, side terraces and a multifunctional transformer in the stern. The sundeck is electrically operated, with space for a 3.7-metre tender, while the bow features a sunpad with a flippable backrest.

The yacht is available with two layout options. The galley-up version includes an equipped kitchen and an L-shaped sofa with a dining table for up to eight guests, while the galley-down option allows for a larger living area on the main deck. Sleeping arrangements on the lower deck offer various configurations, including a full-beam owner’s stateroom, crew cabin and up to four guest cabins.

“Onboard the Pardo GT75 we have translated the experience of seaside living into a luxurious yacht,” says [Massimo Gino](#), co-founder of [Nauta Design](#).

The yacht has an overall length of 22.85 metres, a beam of 5.99 metres, and a draft of 1.65 metres. Optional engine upgrades are available, including three D13 IPS 1350 units.